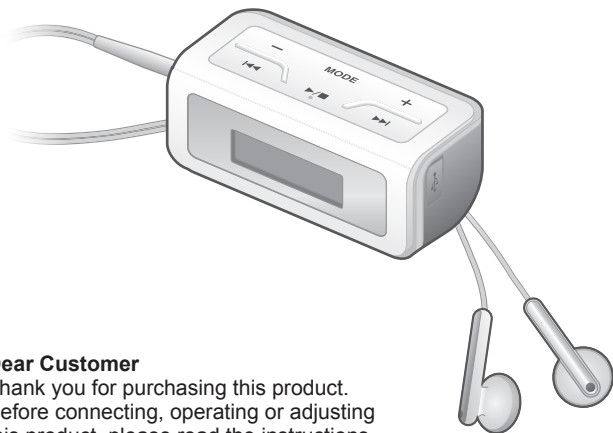


Panasonic®

Operating Instructions Digital Audio Player

Model No. **SV-MP010**
SV-MP020



Dear Customer

Thank you for purchasing this product. Before connecting, operating or adjusting this product, please read the instructions completely. Please keep this manual for future reference.

Panasonic Consumer Electronics Company,
Division of Panasonic Corporation of North America
One Panasonic Way Secaucus, New Jersey 07094
<http://www.panasonic.com>

Panasonic Puerto Rico, Inc.
Ave. 65 de Infantería, Km. 9.5 San Gabriel Industrial Park,
Carolina, Puerto Rico 00985

Supplied accessories

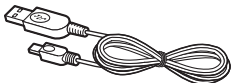


Use numbers indicated in parentheses when asking for replacement parts.

(As of February 2006)

To order accessories, refer to “Accessory Purchases” on page 9.

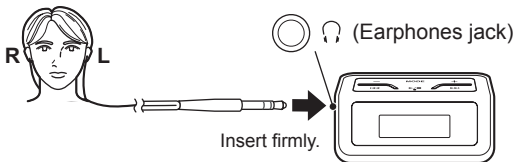
- USB Cable —1 pc
(K1HA05AD0004)



- Alkaline battery (AA) —1 pc



- Stereo earphones —1 pc
(LOBAB0000197)



System requirements

- OS:** Microsoft® Windows® Me, Windows® 2000 Professional, Windows® XP Home Edition/Professional
- The player cannot be used on Microsoft® Windows® 3.1, Windows® 95, Windows® 98, Windows® 98SE, Windows NT® or Macintosh®.
 - Operation on an upgraded OS is not guaranteed.
 - Operation on an OS other than the one pre-installed is not guaranteed.
 - Multi-CPU or Multi-boot environments are not supported.

■ MTP (Media Transfer Protocol) mode※

OS: Windows® XP Home Edition (SP1 or SP2)/ Professional (SP1 or SP2)

Windows Media Player: Windows Media Player 10

- When the unit has been connected to the computer in the MTP mode, it is indicated as “Panasonic Audio Player” on the computer screen. Otherwise it is indicated as “Removable Disk”. (MSC (Mass Storage Class) mode)

Table of contents

Introduction	
Supplied accessories	2
System requirements	2
Table of contents	3
Safety precautions	5
Product service	7
Battery (included)	10
Listening to music	11
Recording music CDs on your computer	12
Recording music on the unit	13
Files and folders structure display on your computer	17
Saving data	18
Basic operations	
Name of parts and basic operations	19
Selecting modes	20
MUSIC mode	
Playing music	21
Selecting a playlist and listening to music	22
Setting mode	
Setting various items	24
Making basic settings	26
Other information	
Erasing folders and files	28
Formatting	30
RESET procedure	31
Troubleshooting guide	32
Specifications	34

※ MTP (Media Transfer Protocol) is a technical specifications developed by Microsoft to connect Windows PCs to portable devices. By connecting to a PC in the MTP mode, audio and other data can be transferred from a PC without the need for a special device driver.

FCC Note:

This equipment has been tested and found to comply with the limits for a Class B digital device, pursuant to Part 15 of the FCC Rules.

These limits are designed to provide reasonable protection against harmful interference in a residential installation. This equipment generates, uses and can radiate radio frequency energy and, if not installed and used in accordance with the instructions, may cause harmful interference to radio communications. However, there is no guarantee that interference will not occur in a particular installation. If this equipment does cause harmful interference to radio or television reception, which can be determined by turning the equipment off and on, the user is encouraged to try to correct the interference by one or more of the following measures:

- Reorient or relocate the receiving antenna.
- Increase the separation between the equipment and receiver.
- Connect the equipment into an outlet on a circuit different from that to which the receiver is connected.
- Consult the dealer or an experienced radio/TV technician for help.

Any unauthorized changes or modifications to this equipment would void the user's authority to operate this device.

This device complies with Part 15 of the FCC Rules. Operation is subject to the following two conditions: (1) This device may not cause harmful interference, and (2) this device must accept any interference received, including interference that may cause undesired operation.

Responsible Party:

Panasonic Corporation of North America
One Panasonic Way
Secaucus, NJ 07094
Telephone No.: 1-800-211-7262

Caution

This unit is not waterproof and should not be exposed to excessive moisture.

To avoid product damage, do not expose this product to rain, water or other liquids.

Safety precautions

- Leave some slack in the cord of the earphones if you wind them around the unit.
- Do not disassemble, remodel, drop, or allow the unit to get wet.
- Do not use or store in locations directly exposed to sunlight, corrosive gases, a heat vent, or a heating appliance.
- Do not use or store in humid or dusty locations.
- Do not use force to open the battery lid.

Listening caution



Do not play your headphones or earphones at a high volume. Hearing experts advise against continuous extended play. If you experience a ringing in your ears, reduce volume or discontinue use.

Do not use while operating a motorized vehicle. It may create a traffic hazard and is illegal in many areas. You should use extreme caution or temporarily discontinue use in potentially hazardous situations. Even if your headphones or earphones are the open-air type designed to let you hear outside sounds, don't turn up the volume so high that you can't hear what's around you. Sound can be deceiving. Over time your hearing "comfort level" adapts to higher volumes of sound. So what sounds "normal" can actually be loud and harmful to your hearing. Guard against this by setting your equipment at a safe level BEFORE your hearing adapts.

To establish a safe level:

- Start your volume control at a low setting.
- Slowly increase the sound until you can hear it comfortably and clearly, and without distortion.

Once you have established a comfortable sound level:

- Leave it there.

Batteries

- Align the poles (+ and -) properly when inserting the battery.
- Do not recharge ordinary dry cell battery.
- Remove the battery if the unit is not to be used for a long time.
- Do not use batteries if the covering has been peeled off.
- Mishandling of battery can cause electrolyte leakage which can damage items the fluid contacts and may cause a fire.

If electrolyte leaks from the batteries, consult your dealer.

Wash thoroughly with water if electrolyte comes in contact with any part of your body.

- If electrolyte gets into your eyes, you may lose your sight. Do not rub your eyes but wash them with clean water, and seek medical advice immediately.
- Do not throw into fire, short-circuit, disassemble, or subject to excessive heat.

Safety precautions

Allergies

Discontinue use if you experience discomfort with the earphones or any other parts that directly contact your skin. Continued use may cause rashes or other allergic reactions.

-If you see this symbol-

Information on Disposal in other Countries outside the European Union



This symbol is only valid in the European Union. If you wish to discard this product, please contact your local authorities or dealer and ask for the correct method of disposal.

Recording and operating problems may occur on some computer systems. Please note that Panasonic and Panasonic dealers cannot be held liable for any lost audio data or other direct or indirect damage except in cases of intentional or gross negligence.

This unit conforms with PlaysForSure which guarantees that music will play back in the event that the PlaysForSure logo is displayed for digital music purchased from an online store. For details on PlaysForSure, go to Microsoft's website.



- The PlaysForSure logo is a trademark or registered trademark of Microsoft Corporation in the United States and/or other countries.
- WMA is a compression format developed by Microsoft Corporation. It achieves the same sound quality as MP3 with a file size that is smaller than that of MP3.
- MPEG Layer-3 audio decoding technology licensed from Fraunhofer IIS and Thomson multimedia.
- Other names of systems and products mentioned in these instructions are usually the registered trademarks or trademarks of the manufacturers who developed the system or product concerned.
The TM and © marks are not used to identify registered trademarks and trademarks in these instructions.
- This product is protected by certain intellectual property rights of Microsoft Corporation and third parties. Use or distribution of such technology outside of this product is prohibited without a license from Microsoft or an authorized Microsoft subsidiary and third parties.

1. Damage requiring service

The unit should be serviced by qualified service personnel if:

- (a) Objects or liquids have gotten into the unit; or
- (b) The unit has been exposed to rain; or
- (c) The unit does not operate normally or exhibits a marked change in performance; or
- (d) The unit has been dropped or the cabinet damaged.

2. Servicing

Do not attempt to service the unit beyond that described in these operating instructions. Refer all other servicing to authorized servicing personnel.

3. Replacement parts

When parts need replacing ensure the servicer uses parts specified by the manufacturer or parts that have the same characteristics as the original parts. Unauthorized substitutes may result in fire, electric shock, or other hazards.

4. Safety check

After repairs or service, ask the servicer to perform safety checks to confirm that the unit is in proper working condition.

■ Product information

For product information or assistance with product operation:

Refer to "Customer Services Directory" on page 8.

For assistance in the continental U.S.A. in obtaining repairs please ship the product to:

**Panasonic Services Company - Customer Servicer
Suite B 4900 George McVay Drive
McAllen, TX 78503**

In Puerto Rico contact Panasonic Puerto Rico, Inc.

Tel.(787) 750-4300 Fax.(787) 768-2910

When shipping the unit carefully pack and send it prepaid, adequately insured and preferably in the original carton.

Include a letter detailing the complaint and provide a day time phone number where you can be reached.

IF REPAIR IS NEEDED DURING THE WARRANTY PERIOD THE PURCHASER WILL BE REQUIRED TO FURNISH A SALES RECEIPT/PROOF OF PURCHASE INDICATING DATE OF PURCHASE, AMOUNT PAID AND PLACE OF PURCHASE. CUSTOMER WILL BE CHARGED FOR THE REPAIR OF ANY UNIT RECEIVED WITHOUT SUCH PROOF OF PURCHASE.

Also, the purchaser will be responsible for shipping the unit to the above address.

Panasonic Consumer Electronics Company,
Division of Panasonic Corporation of North America
One Panasonic Way Secaucus, New Jersey 07094

Panasonic Portable Audio

Limited Warranty Coverage

If your product does not work properly because of a defect in materials or workmanship, Panasonic Consumer Electronics Company or Panasonic Puerto Rico, Inc. (collectively referred to as "the warrantor") will, for the length of the period indicated on the chart below, which starts with the date of original purchase ("warranty period"), at its option either (a) repair your product with new or refurbished parts, or (b) replace it with a new or a refurbished product. The decision to repair or replace will be made by the warrantor.

Product or Part Name	Parts	Labor
All Portable Audio Products except item listed below	One (1) Year	One (1) Year
Rechargeable batteries (in exchange for defective item)	Ten (10) Days	Not applicable

During the "Labor" warranty period there will be no charge for labor. During the "Parts" warranty period, there will be no charge for parts. You must mail-in your product during the warranty period. This Limited Warranty excludes both parts and labor for batteries, antennas, and cosmetic parts (cabinet). This warranty only applies to products purchased and serviced in the United States or Puerto Rico. This warranty is extended only to the original purchaser of a new product which was not sold "as is".

Mail-In Service

For assistance in the continental U.S.A. in obtaining repairs please ship the product to:

Panasonic Service Company
Customer Servicercenter
Suite B
4900 George McVay Drive
McAllen, TX 78503

For assistance in Puerto Rico call Panasonic Puerto Rico, Inc. (787)-750-4300 or fax (787)-768-2910.

When shipping the unit carefully pack and send it prepaid, adequately insured and preferably in the original carton. Include a letter detailing the complaint and provide a day time phone number where you can be reached.

Customer Services Directory

Obtain Product Information and Operating Assistance; locate your nearest Dealer or Servicercenter; purchase Parts and Accessories; or make Customer Service and Literature requests by visiting our Web Site at:

<http://www.panasonic.com/consumersupport>

or, contact us via the web at:

<http://www.panasonic.com/contactinfo>

You may also contact us directly at:

1-800-211-PANA (7262),

Monday-Friday 9 am-9 pm; Saturday-Sunday 10 am-7 pm, EST.

For hearing or speech impaired TTY users, TTY: 1-877-833-8855

Panasonic Puerto Rico, Inc.

Ave. 65 de Infantería, Km. 9.5

San Gabriel Industrial Park, Carolina, Puerto Rico 00985

Products Limited Warranty

IF REPAIR IS NEEDED DURING THE WARRANTY PERIOD THE PURCHASER WILL BE REQUIRED TO FURNISH A SALES RECEIPT/PROOF OF PURCHASE INDICATING DATE OF PURCHASE, AMOUNT PAID AND PLACE OF PURCHASE. CUSTOMER WILL BE CHARGE FOR THE REPAIR OF ANY UNIT RECEIVED WITHOUT SUCH PROOF OF PURCHASE.

Limited Warranty Limits And Exclusions

This warranty ONLY COVERS failures due to defects in materials or workmanship, and DOES NOT COVER normal wear and tear or cosmetic damage. The warranty ALSO DOES NOT COVER damages which occurred in shipment, or failures which are caused by products not supplied by the warrantor, or failures which result from accidents, misuse, abuse, neglect, mishandling, misapplication, alteration, faulty installation, set-up adjustments, misadjustment of consumer controls, improper maintenance, power line surge, lightning damage, modification, introduction of sand, humidity or liquids, commercial use such as hotel, office, restaurant, or other business or rental use of the product, or service by anyone other than a Factory Servicenter or other Authorized Servicer, or damage that is attributable to acts of God.

THERE ARE NO EXPRESS WARRANTIES EXCEPT AS LISTED UNDER "LIMITED WARRANTY COVERAGE". THE WARRANTOR IS NOT LIABLE FOR INCIDENTAL OR CONSEQUENTIAL DAMAGES RESULTING FROM THE USE OF THIS PRODUCT, OR ARISING OUT OF ANY BREACH OF THIS WARRANTY. (As examples, this excludes damages for lost time, travel to and from the servicer, loss of or damage to media or images, data or other memory or recorded content. The items listed are not exclusive, but are for illustration only.)

ALL EXPRESS AND IMPLIED WARRANTIES, INCLUDING THE WARRANTY OF MERCHANTABILITY, ARE LIMITED TO THE PERIOD OF THE LIMITED WARRANTY.

Some states do not allow the exclusion or limitation of incidental or consequential damages, or limitations on how long an implied warranty lasts, so the exclusions may not apply to you.

This warranty gives you specific legal rights and you may also have other rights which vary from state to state. If a problem with this product develops during or after the warranty period, you may contact your dealer or Servicer. If the problem is not handled to your satisfaction, then write to the warrantor's Consumer Affairs Department at the addresses listed for the warrantor.

PARTS AND SERVICE, WHICH ARE NOT COVERED BY THIS LIMITED WARRANTY, ARE YOUR RESPONSIBILITY.

Accessory Purchases

Purchase Parts, Accessories and Instruction Books online for all Panasonic Products by visiting our Web Site at: <http://www.pasc.panasonic.com>

or, send your request by E-mail to: npcparts@us.panasonic.com

You may also contact us directly at:

1-800-332-5368 (Phone) 1-800-237-9080 (Fax Only) (Monday - Friday 9 am to 8 pm, EST.)

Panasonic Services Company

20421 84th Avenue South, Kent, WA 98032

(We Accept Visa, MasterCard, Discover Card, American Express, and Personal Checks)

For hearing or speech impaired TTY users, TTY: 1-866-605-1277

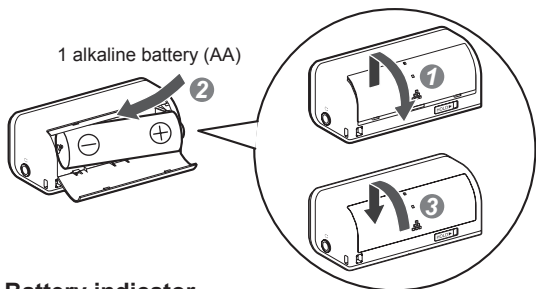
Service in Puerto Rico

Panasonic Puerto Rico, Inc.

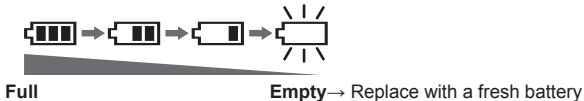
Ave. 65 de Infantería, Km. 9.5, San Gabriel Industrial Park, Carolina, Puerto Rico 00985

Phone (787)750-4300, Fax (787)768-2910

Battery (included)



■ Battery indicator



- When the battery charge is low and the display flashes, the display panel backlight will not light.
- If rechargeable batteries are to be used, rechargeable batteries manufactured by Panasonic are recommended.
- Operation is not guaranteed when used with manganese batteries. Do not use manganese batteries.

Note

Changing the mode* can sometimes cause the battery indicator to change.

*Changing the mode (page 20, Selecting modes)

Step
1

Have the music CDs recorded on your computer beforehand. (👉 page 12)

Use Windows Media Player, a standard Windows® software program.

● **This unit supports WMA and MP3 music files.**

You can also use music content (as either WMA or MP3 music files) downloaded from music distribution services. For details, go to the sites of the applicable services.

Step
2

Connect the unit to the computer. (👉 page 13)

Step
3

Record the music from the computer onto the unit. (👉 page 14)

Step
4

Use the unit to listen to the music. (👉 page 21)

■ Windows Media Player

- If you have Version 8 or earlier, we recommend that you upgrade to Version 9 or 10. Check which version you have by clicking [About Windows Media Player] on the [Help] menu.
- If you have Version 9, you will need an auxiliary plug-in program to convert to the MP3 format.

For details on operation, refer to [Help]; for the latest information or details on plug-ins, go to the Windows Media Player Web site. See the Microsoft Web site for details.

■ Where the music recorded in the computer is saved

Unless the setting of the destination where the music is to be saved has been changed, the music will be saved in the following folder:
My Music in My Documents.

(These displays differ depending on the operating system.)

Recording music CDs on your computer

An example of how to record music CDs is given below using Windows Media Player (hereafter abbreviated to “WMP”) Version 9 (“WMP9”) or 10 (“WMP10”).

1 Insert the music CD into your computer, and start WMP.

Select [start] → [All Programs] → [Accessories] → [Entertainment] → [Windows Media Player]. (The displays given here are examples of what may appear.)

• When WMP is started up for the first time

The WMP setup (installation) screen appears. Follow the on-screen instructions.

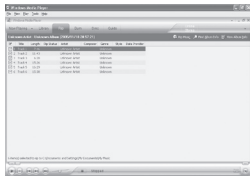
2 Before recording music, set the content protection of WMP to disabled.

1. On the [Tools] menu, click [Options...]. (If the [Tools] menu does not appear, click at the top right.)
2. WMP9: Select the [Copy Music] tab.
WMP10: Select the [Rip Music] tab.
3. Click to clear the “Copy protect music” check box.
4. Click [OK].

3 Select the tracks and record them.

1. WMP9: Select the [Copy from CD].
WMP10: Select the [Rip].
2. Select the tracks to be recorded.
3. WMP9: Select the [Copy Music].
WMP10: Select the [Rip Music].

Recording now starts.



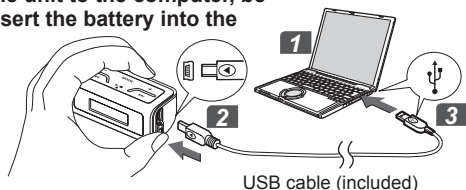
WMP10 screen

Your attention is drawn to the fact that recording pre-recorded tapes or discs or other published or broadcast material may infringe copyright laws.

Recording music on the unit

Connecting the unit to the computer

Before connecting the unit to the computer, be absolutely sure to insert the battery into the unit. (▶ page 10)



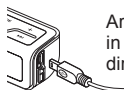
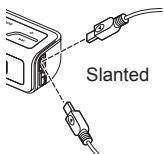
1 Start the computer.

2 Open the USB port cover and connect the USB cable to the unit.

Insert straight in so that the arrow side faces in the direction shown above.

■ Connection precautions

X=Incorrect



3 Connect the USB cable to the PC's USB port.

- When the connection is complete, "USB CONNECTED" appears, and music can be recorded.
- On your computer, open My Computer, and check whether the unit is indicated as a "Removable Disk" or "Panasonic Audio Player".
- When the "LOW BATTERY" or "NO BATTERY" message appears on the screen, replace the battery with a new one.

USB CONNECTED

Removable Disk (x :)
or
Panasonic Audio Player

Recording music on the unit

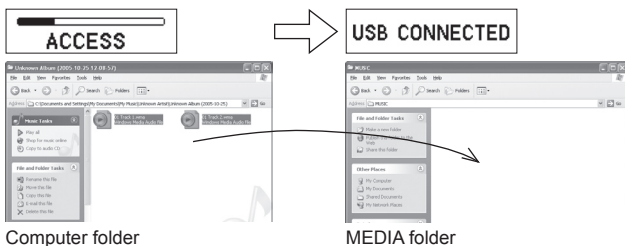
Note

- Two or more units cannot be operated even when they have been connected to one computer.
- Keep the USB cable as straight as possible. Bending the cable too much may destroy music data or cause problems with the computer.
- Operation cannot be guaranteed if you use a USB hub or extension cable.
- Inserting the cable forcibly into the USB connector diagonally or the wrong way round may deform the connector, causing problems with the unit and any device connected to it.

Copy and paste the MP3/WMA

- 1** In My Computer or Explorer, open the folder for the unit (Removable Disk or Panasonic Audio Player).
- 2** Open the MEDIA folder.
- 3** Copy and paste or drag and drop the MP3/WMA folder from your computer's folder into the MEDIA folder.

"ACCESS" appears on the unit's display. When downloading is completed, "USB CONNECTED" re-appears.



■ Recording complete albums

Drag and drop the folder in which the WMA or MP3 files were directly saved, into the MEDIA folder. The folder name will be displayed as a playlist name by the unit.

Using WMP9 or WMP10 to record music

Select [start] → [All Programs] → [Accessories] → [Entertainment] → [Windows Media Player]. (The displays given here are one example.)

1 **WMP9: Click [Copy to CD or Device].** **WMP10: Click [Sync].**

For WMP10:

1. Select [Tools] → [Options] → [Devices] → “Removable Disk (x:)” or “Panasonic Audio Player”.
2. Click [Properties] to display “Removable Disk (x:) Properties” or “Panasonic Audio Player Properties”.
3. Check the “Create folder hierarchy on device” check box on the “Synchronize” tab to turn this setting on.

(Once performed, this procedure is stored in the memory and so need not be performed again in the future.)

2 **Select "Items to Copy" and "Removable Disk" or "Panasonic Audio Player" for the "Items on Device."**

When WMP9 is used, select the MEDIA folder as the transfer destination.

3 **WMP9: Click [Copy].** **WMP10: Click [Start Sync].**

- The music is recorded from the computer onto the unit.
- Only data selected on the “Items to Copy” list will be transferred.

Note

- The recorded tracks are saved in the unit’s MEDIA folder.
- When music has been recorded using WMP10, the Music folder will be created automatically in the unit’s MEDIA folder, and the track files will be stored.
- When tracks downloaded from the subscription type music distribution service are to be recorded in the unit, use the synchronizing function of the WMP10 to transfer the tracks to the unit.

Subscription type music distribution service:

A music distribution service which enables tracks to be downloaded on a time-restricted basis

For further details, go to the website of the music distribution service.

■ **Do not connect or disconnect the USB cable while “ACCESS” on the unit’s display**

- Otherwise, the music data may be destroyed and problems may be caused with the computer.
- Trouble may also develop in the unit.

Disconnecting the unit

- **When the unit is indicated as “Removable Disk” (MSC mode)**
Right-click the “Safely Remove Hardware” icon on the computer’s taskbar.

The “USB Mass Storage Device” window appears on the computer screen. Follow the on-screen instructions to disconnect the USB cable.

※ Depending on the OS, the display differs.

- **When the unit is indicated as “Panasonic Audio Player” (MTP mode)**

Upon completion of the recording, check that “ACCESS” is not shown on the unit’s display, and then disconnect the USB cable.

- When the USB cable is disconnected, the playback of the track recorded first will start after “WAIT...” has appeared on the display.
- If the above procedure is not followed, the music data may be destroyed, making it impossible to play the data properly. Use the unit or the computer to delete the music data which has been destroyed. If the data cannot be deleted, initiate resetting (🔧 page 31).
Once resetting has been initiated, all the stored data will be lost. Re-record the music data on the unit.

Note

The first 256 characters of the filename created on the computer are displayed on this unit.

- This unit supports alphanumerics. It may not be able to display characters other than alphanumerics properly.
- Supports MP3 ID3 V1 tags, ID3 V2.3 tags and WMA tags.
- If there are no ID3 tags, the display shows the “filename.mp3”.
- The ID3 tags recorded for the MP3 will not be displayed properly if they are in a language other than English.
- Compatible with DRM (PDDRM® and WMDRM10®, Microsoft®).
- MP3/WMA files should always be saved in the MEDIA folder. If saved in the root folder, the files cannot be played back or deleted from the unit.
- The saved tracks can be moved to subfolders in the MEDIA folder only on the computer.
- The subfolders in the MEDIA folder are treated as playlists by the unit. (🔧 page 17, Files and folders structure display on your computer)
- This unit can support the Windows Media Player (Version 10) sync download function.
- The unit is PlaysForSure certified to support subscription based music download services.

This unit

Removable Disk or Panasonic Audio Player (this unit)

Copy and paste or drag and drop MP3/WMA files into the MEDIA folder.

Up to 7 levels of subfolders can be created under the MEDIA folder.

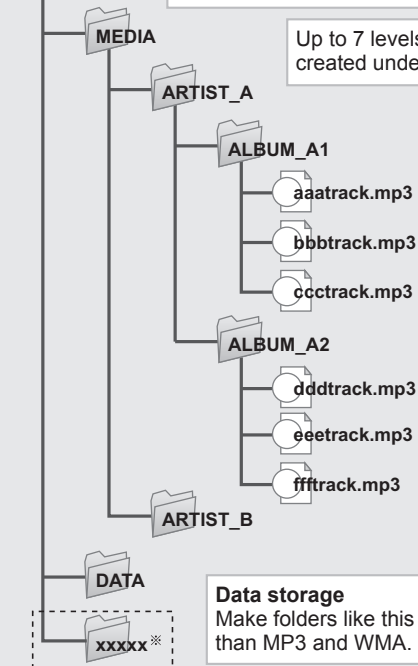
Naming files and folders

Extension
aaatrack.**mp3**
alphanumeric
character

- Folder and files will play in the order in which they are downloaded.
- If "ARTIST_B" has been sent after "ARTIST_A," the playback sequence will be: "ARTIST_A," "ALBUM_A1," "ALBUM_A2" and "ARTIST_B".

Data storage

Make folders like this when saving files other than MP3 and WMA.



- ※ When the unit has been connected to the computer in the MTP mode, it is not possible to create folders in the unit's root folder.
- Files or folders created in the unit's root folder in the MSC mode cannot be displayed in the MTP mode.
- To create a folder, drag and drop a folder of the computer into the unit's MEDIA folder or DATA folder.

■ Folders displayed as playlists for the unit

- The MEDIA folders
- Subfolders in the MEDIA folder created by the computer
- The unit cannot recognize folders beyond seven hierarchical levels (that is, at a depth of eight levels or more).

Note

- Playlists can be selected at each hierarchical level of the folders. (☞ page 22)
- You can record up to the maximum memory capacity of the unit, but the maximum number of files that can be displayed is 999. The maximum number of folders (including the MEDIA folder) that can be displayed is 299. The maximum number of files and folders that can be displayed may be lower depending on recording conditions.

No. of tracks recorded by sound quality
(When the play time per track is 4 minutes)

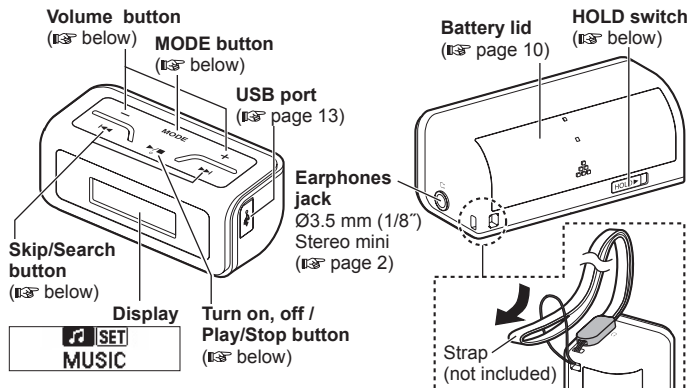
	SV-MP010 (1 GB)	SV-MP020 (2 GB)
64 kbps	Approx. 500 tracks	Approx. 999 tracks
96 kbps	Approx. 330 tracks	Approx. 660 tracks
128 kbps	Approx. 250 tracks	Approx. 500 tracks

- This unit is compatible up to Windows Media Audio 9 (WMA9) . However not with WMA9 Professional/Lossless/Voice and MBR^{**}.
**Multiple Bit Rate: A file that contains the same content encoded at several different bit rates.
- If you use VBR format MP3 files, some of the unit's functions can not be operated normally.
- Do not use your computer to format the unit's memory. Doing so may cause the unit to malfunction. Use the unit to format its memory. (☞ page 30, Formatting)

Saving data

You can use this unit as a removable disk for saving computer data by connecting the USB cable to a computer. (☞ page 17, Data storage)

Name of parts and basic operations

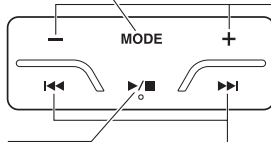


Basic operations

■ Basic playback operations

Display the main menu:

Press [MODE]



Adjust the volume:

Press [+] or [-] (0-25)

Turn ON: Press [▶/■]

Turn OFF: Press and hold [▶/■]

- "Good bye" is displayed, and the unit's power is turned off.
- The power cannot be turned off while the menu is displayed.

Play/Stop: Press [▶/■]

When you next press [▶/■], play resumes from where you stopped it. (Resume)

Skip: Press [◀◀] (backward) or [▶▶] (forward)

Search: During play, press and hold [◀◀] (backward) or [▶▶] (forward)

■ HOLD switch

Button operations are ignored. It prevents:

- The unit turning on unexpectedly causing the battery to run down.
- Interruptions to play.



RQTT0855

Selecting modes

Select the mode to be used from the main menu.

Preparation: Release the HOLD switch. (☞ page 19)

Basic operations

1 Turn the unit on.



2 Display the main menu.



3 Select mode.



- The screens for each of the modes will be displayed.
- If more than 60 seconds pass before proceeding to the next step, repeat from step 2.

MUSIC mode

Play the files recorded on the unit (WMA and MP3 format) in MUSIC mode. (☞ page 21, Playing music)

1 Select "MUSIC".



SET

You can perform the mode settings. (☞ page 24, Setting various items)

1 Select "SET".



Playing music

- Preparation: 1. Record music on the unit. (☞ page 13)
2. Put on the earphones. (☞ page 2)
3. Release the HOLD switch. (☞ page 19)

1 Turn the unit on. (Start play.)



When playback starts, the playback screen appears for approximately 2 seconds, followed by the track name screen. After the track name has been displayed, the playback screen reappears.

- (A) Playback icon (B) Track number (C) Play time (D) Folder name (The name of the folder containing the track now playing is displayed.) (E) Track information

2 Adjust the volume. (0-25)



- When you adjust the volume, the screen will change from track name display to the volume display.
- Basic playback operations (☞ page 19)
- Setting various items (☞ page 24)

3 Stop play.



Note

- To save power, the unit will switch off if left continuously in playback stop mode for 60 seconds (Auto-off function).
- If "PROTECTED" appears on the display (☞ page 33)

Selecting a playlist and listening to music

- Preparation:
1. Recording music on the unit (☞ page 13)
 2. Release the HOLD switch. (☞ page 19)
 3. Put on the earphones. (☞ page 2)
 4. Turn the unit on. (☞ page 19)

Selecting the track from which play is to start

Example: When you want to select TRACK2 ※1

1 Display the playlist selection menu.



2 Select "MEDIA".



3 Select "ARTIST-B".



4 Select "ALBUM-B2".



5 Select "TRACK2" and start play.



- After TRACK2 finishes playing, play continues to the last track of "MEDIA", and then stops.
 - Track numbers are assigned to tracks in the order that the track is recorded on the unit. Tracks will be played back in order from tracks with lower numbers to tracks with higher numbers.
- Example: When you have selected the track numbered "002" to play, the next track to play back will be the track numbered "003" or higher.

Selecting the folder containing the tracks to be played (FOLDER PLAY)

Example: To play all the tracks in ALBUM-B2 ※2

Select "FOLDER PLAY" in step 5. When you press [▶/■], all of the tunes in "ALBUM-B2" will play in the order in which they were recorded.

5 Select "FOLDER PLAY".



Press



Press



FOLDER PLAY icon is displayed.

- When "FOLDER PLAY" is selected, all the tracks in the selected folder are played, and then play stops.
- When the lowest track number in the folder selected for "FOLDER PLAY" is "005", then playback will start from the track numbered "005".

■ Playlist selection menu

MODE



MEDIA

ALL MUSIC

ARTIST-A

ARTIST-B

Music

FOLDER PLAY

ARTIST-C

FOLDER PLAY

ALBUM -C1

FOLDER PLAY

ALBUM -B1

ALBUM -B2

※2

FOLDER PLAY

TRACK1

TRACK2

※1

When "ALL MUSIC" is selected, all the tracks under the MEDIA folder are played, and then play stops.

When music has been recorded using WMP10, the Music folder will be created automatically in the unit's MEDIA folder, and the track files will be stored.

Note

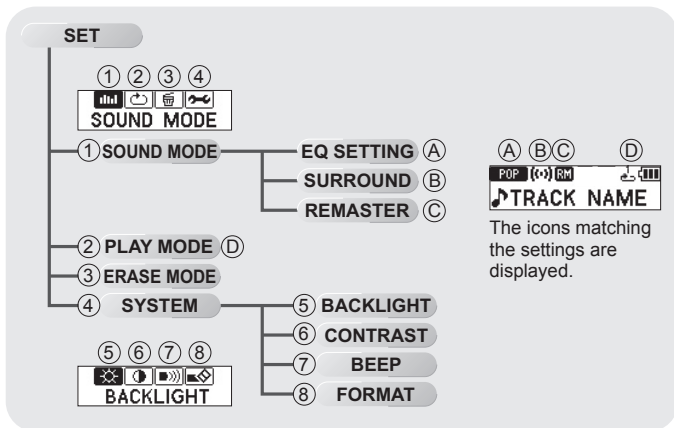
- When there are playlists and tunes in a playlist, both will be displayed as items you can select.
- Basic playback operations (▶ page 19)
- "----" will appear when the count of a track exceeds 10 hours during playback.







MUSIC mode

Setting various items



You can set various items.



■ SET SET

SOUND MODE 	EQ SETTING	NORMAL : No change in sound ROCK : Adds impact JAZZ : Adds club-like POP : Clarifies the treble range CLASSIC : Adds concert hall-like
	SURROUND	ON : The SURROUND effect with presence OFF : Normal play
	REMASTER (Digital Re-master)	ON : Sound enhanced OFF : Normal play
PLAY MODE 	NORMAL : Normal play ALL-REP. : All tracks in a list repeat ONE-REP. : 1 track repeat RANDOM : All tracks in a list random repeat	
ERASE MODE 	TRACK : Erases selected tracks in the playlist. MEDIA : Erases all tracks in the playlist.	
SYSTEM	General system setting  below	

SYSTEM

BACKLIGHT 	5s, 20s, 1min Setting the duration the display will light when a button is pressed
CONTRAST	Adjusting the screen contrast
BEEP	ON : A beep is sounded when a button is operated. OFF : A beep is not sounded when a button is operated.
FORMAT	The unit's memory can be initialized (formatted) by the unit itself. Doing so will erase all the recorded data. ( page 30)

SET

Setting mode

RQTT0855

Setting various items

Making basic settings

Example: Setting the amount of time for the backlight to be displayed

Preparation: 1. Release the HOLD switch. (☞ page 19)

2. Turn the unit on. (☞ page 19)

1 Display the main menu.



2 Select "SET".



3 Select "SYSTEM".



The SYSTEM settings menu will be displayed.

4 Select "BACKLIGHT".



The BACKLIGHT time selection menu will be displayed.

5 Select "1min".



When the settings are completed, the playback screen will reappear.

Each time you press
➤ 1min ↔ 5s ↔ 20s ←
(1 minute) (5 seconds) (20 seconds)

Note

The next time music is played, the unit will operate under the settings which have just been established.

■ PLAY MODE settings

Example: When setting "ONE-REP."

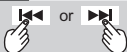
1 Display the main menu.

MODE

Press

 SET
MUSIC

2 Select "SET".



Press

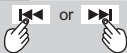
 SET
SET



Press

 SOUND MODE

3 Select "PLAY MODE".



Press

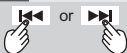
 PLAY MODE



Press

PLAY MODE
NORMAL

4 Select "ONE-REP."



Press




PLAY MODE
ONE-REP.



Press

 
▶001 00:01

The display returns to the playback screen where the "ONE-REP." icon was displayed.

- **NORMAL** : Normal play
- ↕
- ALL-REP.** :  All tracks in a list repeat
- ↕
- ONE-REP.** :  One track repeat
- ↕
- **RANDOM** :  All tracks in a list random repeat

Note

- To release the settings, select NORMAL at the step 4.
- If "FOLDER PLAY" is selected on the playlist menu after "ALL-REP." or "RANDOM" has been set, only the tracks in the selected folders are played.

SET

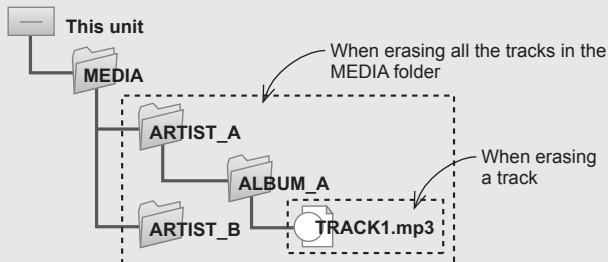
Setting mode

RQTT0855

Erasing folders and files

The recorded data can be erased using the unit menu.

- Preparation:** 1. Release the HOLD switch. (☞ page 19)
2. Turn the unit on. (☞ page 19)



In the ERASE MODE, two erasure methods can be selected.

1. Erase folders — By selecting the MEDIA folder, all the tracks in the selected folder are erased.
2. Erase tracks — The track now playing or stopped is erased.

Note

- You cannot select and erase files in folders using this unit. Use your computer to select and erase files.
- Do not delete the unit's system.hds, DevIcon.fil and DevLogo.fil files. Doing so may cause the unit to malfunction.

When erasing all the tracks in the folder

Example: When erasing all the tracks in the MEDIA folder

1 Display the main menu.



2 Select "SET".



3 Select "ERASE MODE".



ERASE MODE



ERASE MODE
TRACK

4 Select the folder to be erased.



ERASE MODE
MEDIA



ERASE?
YES NO

5 Select "YES".



ERASE?
YES NO



ARE YOU SURE?
YES NO

6 Select "YES".



ARE YOU SURE?
YES NO



DELETING...

BE DELETED

NO TRACK

All the tracks in the MEDIA folder will be erased.

When erasing a track

Example: When erasing TRACK1
While "TRACK1" is playing or stopped:

4 Select "TRACK".



ERASE MODE
TRACK



ERASE MODE
TRACK1

5 Select "YES".



ERASE?
YES NO



ERASE?
YES NO



DELETING...

BE DELETED

The selected TRACK1 is erased.

Formatting

The unit's memory can be initialized (formatted) by the unit itself. Doing so will erase all the data recorded on it.

Initiate the formatting while the battery indicator shows a full charge.

Preparation: 1. Release the **HOLD** switch. (☞ page 19)

2. Turn the unit on. (☞ page 19)

3. Display the main menu. (☞ page 20)

1 Select "SET". (☞ page 24, Setting various items)



2 Select "SYSTEM".



3 Select "FORMAT".



4 Select "YES".



5 Select "YES".



Note

- Do not use your computer to format the unit's memory.
- Do not remove the battery during formatting. Doing so may cause the unit to malfunction.
- If the remaining battery charge becomes depleted or the battery is removed before formatting is completed, initiate the reset procedure. (☞ page 31)

RESET procedure

If the screen display fails to change, operation is slow or the unit's operation is otherwise unstable, try removing the battery and then putting it back inside. If the symptom still persists, follow the resetting procedure below.

Initiating resetting makes it possible to delete files which cannot be deleted using the computer or the unit.

Initiate the reset procedure while the battery indicator shows a full charge.

1. Slide the [HOLD] to ON.

2. Turn the unit on.

3. While "HOLD" screen is displayed, press the keys in the following sequence:

[MODE] → [-] → [+] → [-] → [+] → [MODE].

- Resetting now begins, and after it is completed, the power turns off.
- After pressing [MODE], press the button for the next operation without delay.
- All settings return to the factory preset. All recorded tracks are erased.
- Do not remove the battery during resetting. Doing so may cause the unit to malfunction.

Troubleshooting guide

Before requesting service, make the below checks. If you are in doubt about some of the check points, or if the remedies indicated in the chart do not solve the problem, refer to the “Customer Services Directory” on page 8.

No operation	<ul style="list-style-type: none">• The HOLD function is on.• Replace the battery if it is dead.
No sound, there is a lot of noise or it is hard to hear the sound	<ul style="list-style-type: none">• Ensure the earphone plug is inserted firmly.• Wipe the plug clean with a clean cloth.• Turn up the volume.• Keep this unit away from mobile telephones. <p>■ Concerning the noise heard with "REMASTER" at "ON" With some CDs, noise may be heard in the treble range when playing the MP3 or WMA files created from those CDs with "REMASTER" at the "ON" setting. If noise is heard, set "REMASTER" to "OFF".</p>
Play doesn't resume from the track where I stopped play	<ul style="list-style-type: none">• This doesn't work if: You download or delete files, or change the battery.
Play doesn't start from the first track	<ul style="list-style-type: none">• The random play mode may be on.• Play usually resumes from the track where you last stopped play. Use skip to return to the first track.• Ensure that "FOLDER PLAY" has not been selected. (🔍 page 23)
The unit stops working	<ul style="list-style-type: none">• Reinsert the battery after taking it out and keeping it out for 5 seconds, and turn on the power. If there is still no improvement, reset the unit. (🔍 page 31, RESET procedure)
The display is too dark or too light	<ul style="list-style-type: none">• Adjust the contrast. (🔍 page 25)
The display just shows "WAIT..."	<ul style="list-style-type: none">• "WAIT..." will be displayed while the unit is writing data to memory after the USB cable is removed following recording, and also while the unit is reading music data when the unit is turned on. Display time will vary depending on the number of songs recorded and the number of folders. <p>For 500 songs and 50 folders: Approx. 10 seconds</p>

The backlight does not light	<ul style="list-style-type: none"> • The battery charge may be low. (☞ page 10)
The unit is not recognized even when it has been connected to the computer	<ul style="list-style-type: none"> • Disconnect the USB cable, reboot the computer, and then connect the unit to the computer again.
The tracks downloaded from the subscription type music distribution service cannot be transferred to the unit using WMP10	<ul style="list-style-type: none"> • The unit's "secure clock"* has been lost. First connect the PC to the Internet, and then use the synchronizing function of the WMP10 to transfer the tracks to the unit.

■ Displays

NO TRACK	There is no audio data in the MEDIA folder.
LOW BATTERY	The battery is dead. Change the battery.
NO BATTERY	Insert the battery.
HOLD	The HOLD switch is on.
OVER LIMIT	You have tried to record more than 999 tracks into folder. The number of folder hierarchies exceeds seven.
PROTECTED	<ul style="list-style-type: none"> • The track is protected so it cannot be played by the unit as is. Use Windows Media Player to transfer the tracks on the computer to the unit, and then play them on the unit. (☞ page 15, Using WMP9 or WMP10 to record music) • The deadline for using the track files downloaded from the music distribution service has passed. • The unit's "secure clock" has been lost since either the battery is dead or it has not been installed. First install a new battery, connect the PC to the Internet, and then use the synchronizing function of the WMP10 to transfer the track files to the unit again. (☞ page 15, Using WMP9 or WMP10 to record music)
FILE ERROR	This is a file which cannot be played by this unit.

*Secure clock: A clock function required to play contents for which a period of validity or other time-based restriction has been set

Specifications

Memory size	SV-MP010 : 1 GB SV-MP020 : 2 GB
Supported sampling frequency	MP3 : 8 kHz to 48 kHz WMA : 22.05 kHz, 32 kHz, 44.1 kHz and 48 kHz
Supported bit-rates	MP3 : 8 kbps to 320 kbps (128 kbps is recommend) WMA : 32 kbps to 192 kbps (96 kbps is recommend)
No. of channels	Stereo, 2 channels
Frequency response	20 Hz to 20,000 Hz (+0 dB, -6 dB)
Output	3 mW + 3 mW (16 Ω, Ø3.5 mm (1/8") stereo mini jack)
Power supply	DC 1.5 V (one alkaline battery)
Approximate play times	80 hours (The play time shown is when the bit rate is 128 kbps (MP3), EQ SETTING (NORMAL), SURROUND (OFF), REMASTER (OFF), volume is 12, the backlight is not used, the ambient temperature is 25°C and supplied alkaline battery is used.)
Dimensions (W × H × D)	Maximum: 62.5 mm × 28.5 mm × 29.0 mm 2 4/9" × 1 1/8" × 1 1/7" Cabinet: 62.0 mm × 28.5 mm × 28.5 mm 2 7/16" × 1 1/8" × 1 1/8"
Mass	51.5 g with battery (1.82 oz.) 28.0 g without battery (0.98 oz.)

- Specifications are subject to change without notice.
- The play time shown depends on operating conditions.
- Mass and dimensions are approximate.
- GB means one billion bytes. Useable capacity will be less.
- This product supports the following character codes. The display may not appear correctly with other character codes.

Language	Display	Character code
ENGLISH	ENGLISH	Unicode

The serial number of this product can be found inside the battery compartment. Please note it in the space provided below and keep as a permanent record of your purchase to aid identification in the event theft.

MODEL NUMBER _____
SERIAL NUMBER _____

User memo :

DATE OF PURCHASE _____
DEALER NAME _____
DEALER ADDRESS _____

TELEPHONE NUMBER _____

Maintenance

If the surfaces are dirty

To clean this unit, wipe with a soft, dry cloth.

- Never use alcohol, paint thinner or benzine to clean this unit.

